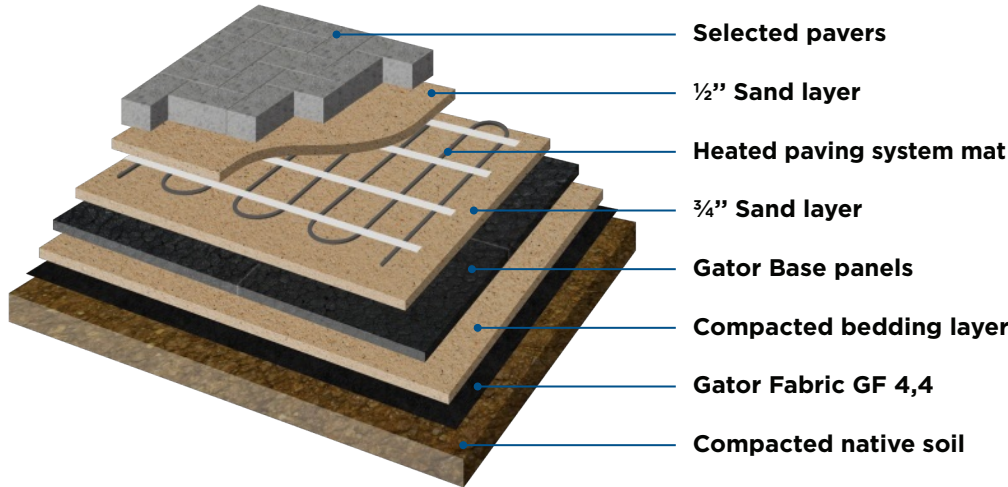


# HEATED PAVING SYSTEM

Revision Date (dd/mm/yyyy): 31/01/2023



**This step-by-step on how to install a heated paving system using Gator Base panels in pedestrian applications.**

## STEP 1 EXCAVATION FOR HEATED PAVING SYSTEM USING GATOR BASE

Factors to consider when excavating – The total depth required will be determined by adding the thickness of the Gator Fabric GF4.4, compacted sand or stone (ASTM No. 9 stone) (3/4" [20 mm]), GATOR BASE (3/4" [20 mm]), a sand layer (3/4" [20 mm]) heated paving system mat, an additional sand layer (1/2" [13 mm]) and paver, slab, stone. Excavate 6" (15 cm) wider than the perimeter of the paved surface. Use a shovel or excavator to complete the excavation. Before excavating, consult with local utilities to avoid damaging any buried pipes or wires.

## STEP 2 LEVELING AND COMPACTING OF THE SOIL

- A** After excavation, level the surface with a rake or shovel. Plan a 2% slope from any structure, especially a house.
- B** To compact the soil densely, use a vibrating plate or hand tamper in confined areas. The surface should be as smooth as possible; Using a pipe, check by rolling it over the compacted surface to check that there are no protrusions or hollows of more than 3/8" (1 cm). Once the ground leveling is complete, carry on to step 3.





# HEATED PAVING SYSTEM

Revision Date (dd/mm/yyyy): 31/01/2023

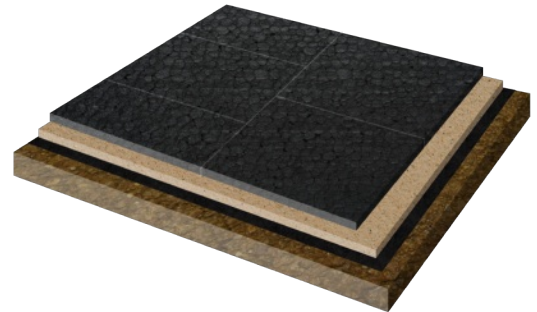
## STEP 3 ADD GATOR FABRIC GF4.4 AND COMPACTED SAND

- A** Cover the excavated area and sides with Gator Fabric GF4.4.
- B** Spread an even layer of sand (3/4" [20 mm] thick) over the Gator Fabric GF4.4. The use of stone in the size of ASTM No. 9 is also an accepted method of installation. To ensure the uniformity of the biaxial thickness of the sand or the ASTM No. 9 stone, use 2 pipes of 3/4" (20 mm) spread 4 ft to 6 ft (1.2 to 1.8 m) apart on the Gator Fabric GF4.4. Spread the sand or stone between the pipes. Using a plank, level the fill against the pipes. After removing the pipes, fill in the hollows. Keep in mind that the sand leveling, and compaction step are the last step before installing the GATOR BASE.
- C** Using a hand tamper or vibrating plate, moisten the sand and compact the filling sand to a thickness of 1/2" (13 mm). The surface should be smooth. This will represent the mirror of the finished product.



## STEP 4 INSTALL THE GATOR BASE

Cover the entire excavated surface with the GATOR BASE (the excavation and the GATOR BASE should be 6" (15 cm) wider on each side of the final line of pavers. Lay the GATOR BASE units in an alternating (staggered) pattern and ensure they lock together perfectly and remain stable while installing the selected paver or stone. With the help of a utility knife, eliminate visible curves or excess salient angles.

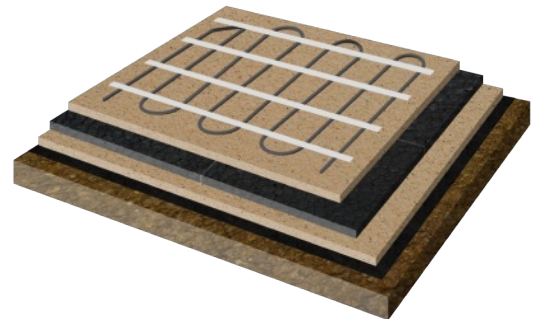


## STEP 5 INSTALLATION OF THE HEATED PAVING SYSTEM

- A** Spread an even layer of sand (3/4" [20 mm]) thick over the Gator Base. The use of stone in the size of ASTM No. 9 is also an accepted method of installation.
- B** Lay the heated paving system mats over the bedding layer.

### Note:

- 1** Prior laying the second layer of sand over the heated paving system mats, test the system to ensure it is fully operational.
- 2** Many radiant heat suppliers offer a design service to help you get the right equipment for your project.
- 3** The polyolefin cables are strong enough to resist damage that could be caused by the water, the sand or the abrasion of the ASTM No.9 stone used as a bedding layer.
- 4** Sensors will measure the temperature and moisture in the environment, which will automatically turn on/off the system. The wires and mats lead to one central junction box.





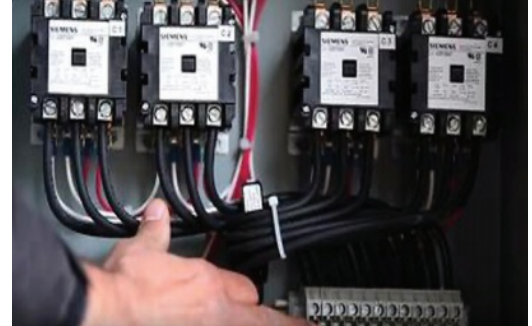
# HEATED PAVING SYSTEM

Revision Date (dd/mm/yyyy): 31/01/2023

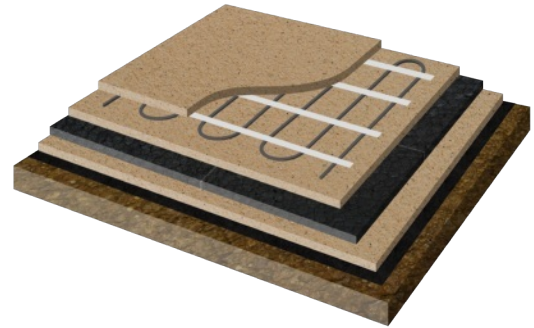
## STEP 5 INSTALLATION OF THE HEATED PAVING SYSTEM (CONT.)

### Note:

- 5 The Install of the relay box; we recommend following the proper schematics and working with a professional electrician for this step.
- 6 The control panel will be link to the terminal block. It will also show if the zones are working or not.
- 7 Gator Base is compatible with a heated paving system (up to 122°F (50°C))

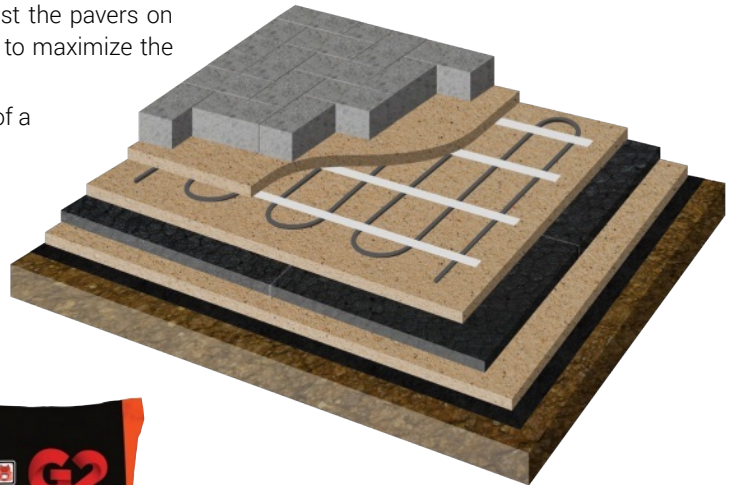


- C Add a second even layer of (1/2" [13 mm]) sand over the heated paving system mats.



## STEP 6 PAVERS AND GATOR EDGE INSTALLATION

- A Install the select pavers over the 2nd layer of sand.
- B Install the Gator Edge on the GATOR BASE, firmly against the pavers on all sides. Thread a Gator Base Screw every second hole to maximize the lateral support provided by the Gator Edge.
- C Compact the pavers into the bedding layer with the help of a roller compactor.



## STEP 7 APPLICATIONS OF GATOR MAXX G2

Always refer to the latest [GATOR MAXX G2](#) Technical Data Sheet (TDS) at [AllianceGator.com](#) before installing [GATOR MAXX G2](#).

